

**NATURE THE MENTOR IS A TEACHER SUPPORT PROGRAM OF REGENESYS, AN INITIATIVE TO PREPARE TOMORROW'S PLANET STEWARDS. IT ADOPTS THE **LIVING BEING SYSTEM** OF TEACHING.**

**HERE'S HOW THIS WILL HELP THE EDUCATORS**

- MAKING CLASSROOMS CREATIVE AND INTERDISCIPLINARY**
- INCULCATE ENVIRONMENTAL CONSCIOUSNESS IN DAILY CLASSES**

**THE LIVING BEING WAY OF TEACHING ACKNOWLEDGES EVERY STUDENT IS DIFFERENT SO IS EVERY TEACHER . NTM ENABLES AND BUILDS THE CAPACITY OF EVERY STUDENT AND EDUCATORS TO EXPRESS THEIR UNIQUE POTENTIAL.**

### **MODULE - 1**

**MUGA CONSCIOUSNESS: ( THIS MODULE WOULD HELP THE EDUCATORS UNDERSTAND HOW TO HELP THE CHILDREN VISUALIZE THE LARGER PICTURE AND THE INTERCONNECTEDNESS OF THE SYSTEMS . THIS WILL HELP THE CHILDREN MAKE A BETTER SENSE OF THE SUBJECTS IN THE CONTEXT OF THE REAL WORLD)**

### **SYSTEMS THINKING IN TEACHING MODULE - 2**

**HAIKU CONSCIOUSNESS ( HOW THE PHILOSOPHY OF HAIKU INTEGRATES SCIENCE AND ARTS IN TEACHING A CONCEPT)**

### **INTERDISCIPLINARITY IN TEACHING**

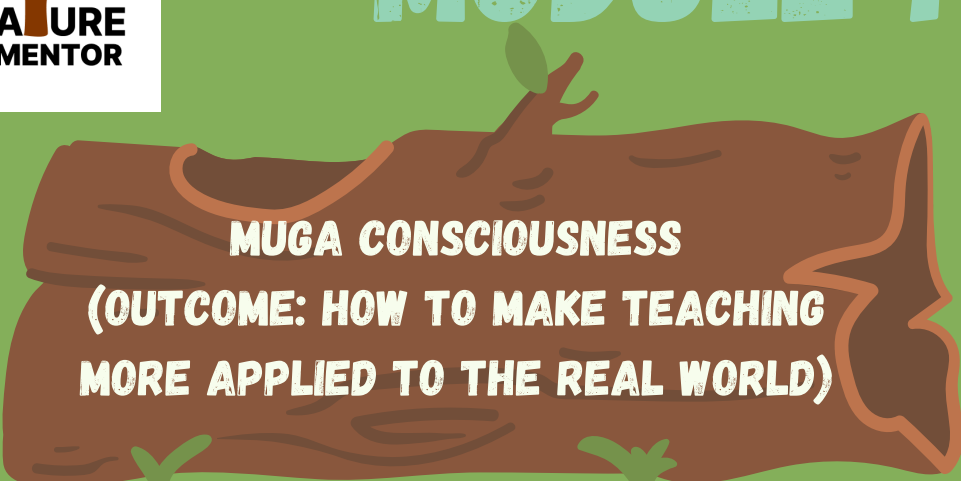


**THESE PROGRAMS WILL  
PROVIDE THEM WITH  
A WORKBENCH OF  
  
NATURE  
  
WITH THE  
TOOLBOX OF SCIENCE,  
LANGUAGE ART & VISUAL ART.**



### **TAKE AWAYS:**

- 1. HOW TO INTEGRATE ENVIRONMENT THROUGH SYSTEMS THINKING INTO YOUR LESSON PLAN**
- 2. HOW TO MAKE YOUR APPROACH INTERDISCIPLINARY**



**MUGA CONSCIOUSNESS**  
**(OUTCOME: HOW TO MAKE TEACHING**  
**MORE APPLIED TO THE REAL WORLD)**

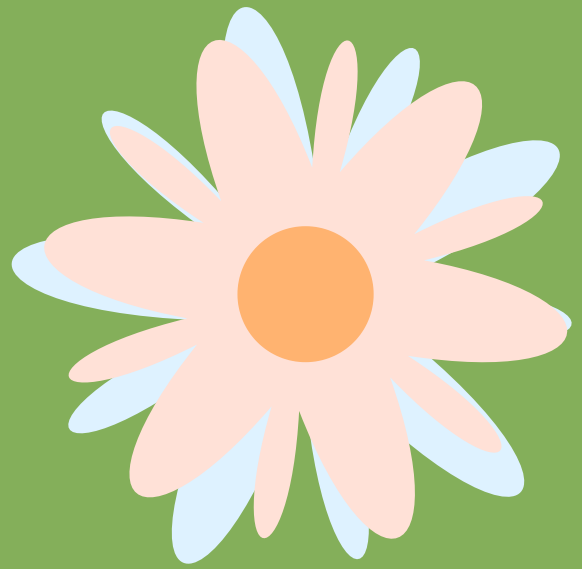


"MUGA" IS A JAPANESE PHILOSOPHY WHICH SUGGESTS THAT HUMANS ARE **AN INTEGRAL PART OF NATURE**, AND THEY ARE INTERCONNECTED TO THE ENTIRE WORLD.

IT TRANSLATES TO A RESTORATIVE LEARNING PROCESS CALLED **SYSTEMS THINKING**.

SYSTEMS THINKING CAN BE A POWERFUL CLASSROOM TOOL. BY VIEWING TEACHING THROUGH A SYSTEMS THINKING LENS, EDUCATORS CAN HELP STUDENTS RECOGNIZE HOW DIFFERENT SYSTEMS INTERACT, IDENTIFYING MEANINGFUL CONNECTIONS BETWEEN THEM. THIS NOT ONLY DEEPENS STUDENTS' UNDERSTANDING OF SPECIFIC SUBJECTS, BUT ALSO STRENGTHENS THEIR CRITICAL THINKING ABILITIES.

IT MAKES THE **CLASS INTERACTIVE** AND **CONNECT LEARNING TO LIFE**. THE BASIC ESSENCE OF EDUCATION!



**THIS ONE-DAY WORKSHOP WILL HELP THE EDUCATORS TO MAKE THE BIGGER PICTURE VISIBLE TO YOUR LEARNERS AND LINK THEIR LEARNING TO LIFE IN TRUE SENSE. THE MODULE WILL EQUIP THE EDUCATORS WITH SYSTEMS THINKING TOOLS TO BE USED IN THE CLASSROOM.**



**1. DISCOVER**

**2. DEVELOP**

**3. DEFINE**

**4. DELIVER**

## HARMONIOUS HAIKU

**OUTCOME: HOW TO  
INTEGRATE SCIENCE AND  
ARTS IN OUR LESSON PLAN**

**HAIKUS ARE A TYPE OF SHORT FORM POETRY ORIGINALLY FROM JAPAN. TRADITIONAL JAPANESE HAIKU CONSIST OF THREE PHRASES COMPOSED OF 17 PHONETIC UNITS IN A 5, 7, 5 PATTERN. HAIKU CONSCIOUSNESS BUILDS A RELATIONSHIP BETWEEN SENSORY IMAGES AND CONCEPTUAL MEMORY. IF THIS CONSCIOUSNESS CAN BE USED IN CLASSROOM IT CAN MAKE A TEACHING APPROACH INTERDISCIPLINARY.**

**THIS ONE-DAY WORKSHOP  
WILL GIVE THE EDUCATORS TOOLS TO  
MAKE YOUR LESSON PLAN  
INTERDISCIPLINARY**

**IF NUMBERS AREN'T THEIR THING, THEN MAYBE WORDS ARE.  
AND IF WORDS AREN'T THEIR THING, ABSTRACT PATTERNS ARE.  
MATHEMATIC IS SET OF NUMBERS THAT ARE RELATED TO  
EACH OTHER IN A SPECIFIC RULE, THEN THE RULE OR MANNER  
IS CALLED A PATTERN. HAIKU SPANS ACROSS ALL OF THESE  
DISCIPLINES. IT CAN BE A POWERFUL TOOL TO MAKE  
A LEARNING INTERDISCIPLINARY.**



**OBSERVE**

**CONNECT**

**COLLABORATE**

**CREATE**





## WHY INCORPORATE SYSTEMS THINKING IN YOUR TEACHING PROCESS??

**1. SYSTEMS THINKING ENCOURAGES STUDENTS TO LOOK BEYOND ISOLATED FACTS OR EVENTS AND CONSIDER THE BIGGER PICTURE. IT HELPS THEM DEVELOP A HOLISTIC UNDERSTANDING OF ALL CONCEPTS BY UNDERSTANDING THE INTERCONNECTIONS AND INTERDEPENDENCIES. THIS APPROACH PROMOTES CRITICAL THINKING AND HELP CONNECT LEARNING TO LIFE.**

**2. SYSTEMS THINKING EQUIPS STUDENTS WITH VALUABLE PROBLEM-SOLVING SKILLS. BY ANALYZING COMPLEX SYSTEMS AND UNDERSTANDING THE RELATIONSHIPS BETWEEN THEIR ELEMENTS, STUDENTS CAN IDENTIFY THE ROOT CAUSES OF PROBLEMS. THIS APPROACH ENABLES THEM TO DEVELOP MORE EFFECTIVE AND SUSTAINABLE SOLUTIONS THAT ADDRESS THE UNDERLYING SYSTEMIC ISSUES, RATHER THAN SIMPLY TREATING SYMPTOMS IN REAL LIFE SCENARIO**

**3. SYSTEMS THINKING FOSTERS ENVIRONMENTAL AWARENESS AND A DEEP CONNECTION TO NATURE. BY UNDERSTANDING THE INTERCONNECTEDNESS OF ECOSYSTEMS AND THE IMPACT OF HUMAN ACTIVITIES, STUDENTS DEVELOP A SENSE OF STEWARDSHIP AND RESPONSIBILITY TOWARDS THE ENVIRONMENT. THEY BECOME MORE CONSCIOUS OF THE CONSEQUENCES OF THEIR ACTIONS ON THE NATURAL WORLD, LEADING TO MORE SUSTAINABLE BEHAVIORS AND PRACTICES.**



## HOW MAKING YOUR LESSON PLAN INTERDISCIPLINARY MAKE THE TEACHING PROCESS MORE EFFECTIVE?

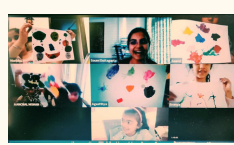
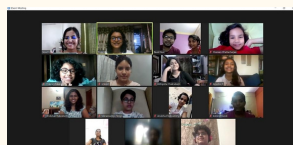
**1. INTERDISCIPLINARY LESSON PLANS PROMOTE THE DEVELOPMENT OF TRANSFERABLE SKILLS THAT ARE VALUABLE IN VARIOUS ASPECTS OF LIFE. STUDENTS LEARN TO APPLY KNOWLEDGE AND SKILLS FROM ONE DISCIPLINE TO ANOTHER, ENHANCING THEIR ADAPTABILITY AND VERSATILITY. THIS APPROACH HELPS STUDENTS BECOME LIFELONG LEARNERS WHO CAN TACKLE NEW CHALLENGES AND NAVIGATE DIVERSE CONTEXTS EFFECTIVELY.**

**2. BY EXPLORING A SUBJECT FROM MULTIPLE PERSPECTIVES, STUDENTS GAIN A BROADER AND DEEPER UNDERSTANDING OF THE TOPIC. THEY CAN SEE HOW DIFFERENT DISCIPLINES CONTRIBUTE TO A COMPREHENSIVE UNDERSTANDING AND DEVELOP A MORE WELL-ROUNDED VIEW OF THE SUBJECT MATTER.**

**3. IT FOSTERS HIGHER-ORDER THINKING PROCESSES. THIS APPROACH HELPS STUDENTS DEVELOP ANALYTICAL SKILLS, MAKE CONNECTIONS BETWEEN DIFFERENT PIECES OF INFORMATION, AND THINK CREATIVELY TO SOLVE PROBLEMS. IT WILL ALSO ENHANCE THE ABILITY TO CONSIDER DIVERSE PERSPECTIVES.**



working in groups





## We are standing at the edge!

*As the world is changing so must we change the way we teach and learn!!*

*'Regenesys' draws upon inspiration from Nature as a model, mentor and muse to rethink how to best prepare our future generation for the future world. Let's co-create a regenerative learning process where every student and educator can express their unique potential to serve their community and the planet and in the process to serve themselves.*



**Soumi Duttagupta**  
Founder of ReGenesys



### Reach out to her @

- Ph: 9970167435/9810875436
- mail: soumi@regenesys.co.in
- <https://www.linkedin.com/in/soumiduttagupta/>

### Digital links:

- <https://www.regenesys.co.in>
- <https://www.wordplay.co.in/>
- <https://www.linkedin.com/company/wordplay-writing/?viewAsMember=true>
- [https://www.instagram.com/soumi\\_wordplay/?hl=en](https://www.instagram.com/soumi_wordplay/?hl=en)
- <https://www.facebook.com/Wordplay-208962716523438>